

PARK RIDGE

DUBAI HILLS
ESTATE



EMAAR



MERAAS



WHERE URBAN LIVING
AND NATURE UNITE

1, 2 and 3 bedroom apartments
Equipped with modern amenities
Adjacent to Central Park & Boulevard



TAKE A STROLL THROUGH THE
SCENIC CENTRAL PARK AND
ENJOY THE OUTDOORS

Children's Play Areas, Outdoor Gymnasium
2 Kilometre Jogging Track, Art Installations
Fountains, Water Features and Splash Pad



EMAAR

EMAAR

EMAAR

EMAAR

EXPLORE A RANGE OF RETAIL OUTLETS,
CAFÉS, RESTAURANTS AND RECREATIONAL
FACILITIES ON THE BOULEVARD

Popular Cafés and Restaurants
A Variety of Retail Stores and Recreation Facilities
Art Studios and Installations

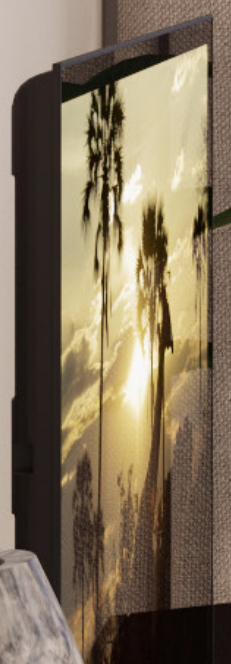


VISIT DUBAI HILLS ESTATE MALL FEATURING
HIGH STREET FASHION BRANDS, DINING
OPTIONS AND ENTERTAINMENT VENUES

Cutting-edge Cinemas, Family Entertainment Venues
Linked Directly to Future Metro Lines
Leading Fashion and Retail Outlets

DUBAI HILLS MALL











AMENITIES



DUBAI HILLS ESTATE

DUBAI MARINA
THE DUBAI MALL
BURJ KHALIFA

10
MINUTES

JUMEIRAH
BEACH

12
MINUTES

DUBAI CREEK
TOWER

15
MINUTES

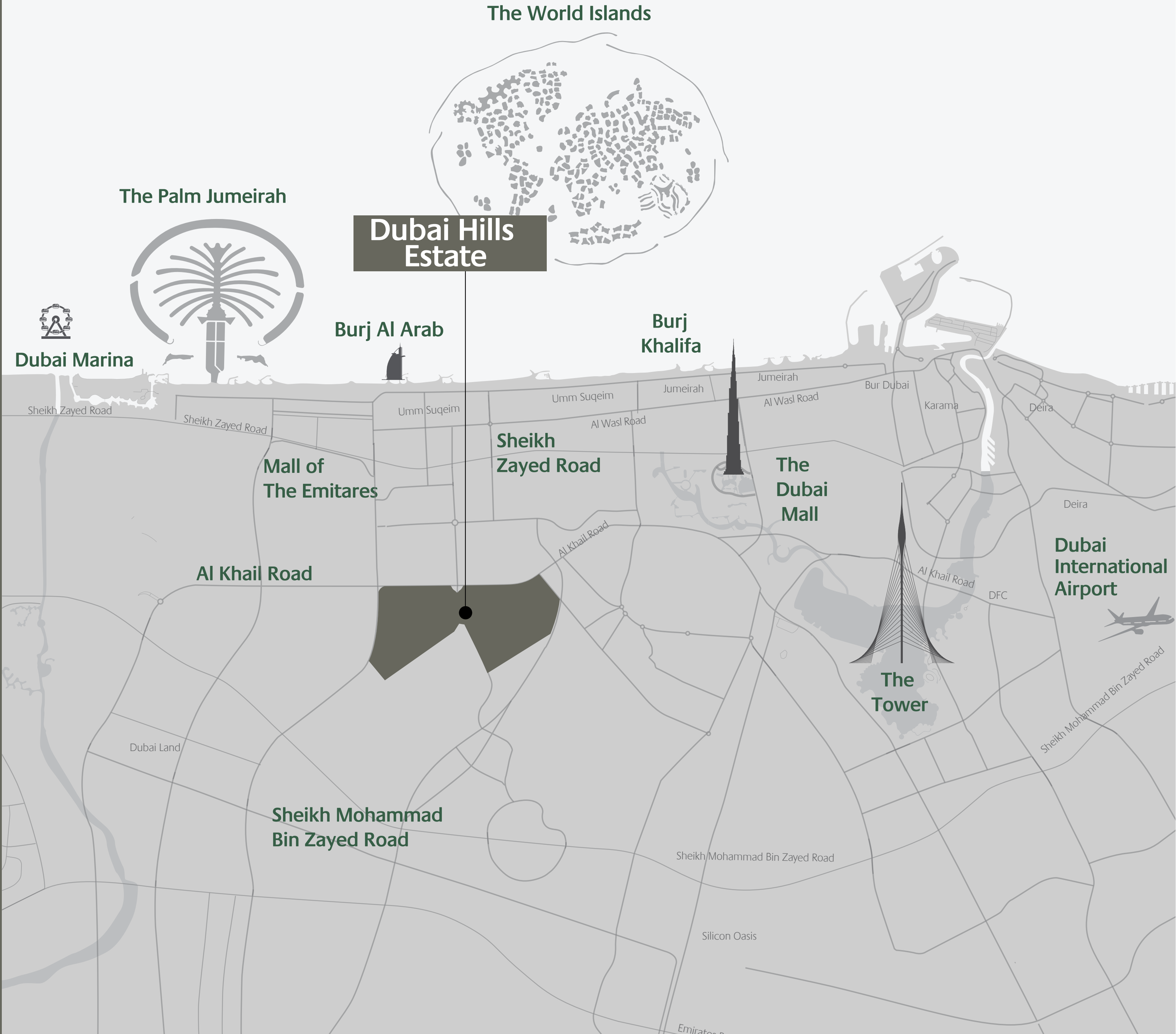
DUBAI INTL
AIRPORT

20
MINUTES

AL MAKTUUM
AIRPORT

35
MINUTES

All Distances are Approximate



DUBAI HILLS

ESTATE



32,000
RESIDENTIAL UNITS



282,000 SQM
REGIONAL MALL



132,000
RESIDENTS



3
SCHOOLS



1,100 KEYS
3 HOTELS



1.45 MILLION
SQM
PARKS & OPEN SPACES



54
KILOMETERS
BICYCLE ROUTES



1.120 M SQM
18 HOLE GOLF COURSE



2
HOSPITALS

DUBAI HILLS
ESTATE

PARK RIDGE

TOWER C & TOWNHOUSES

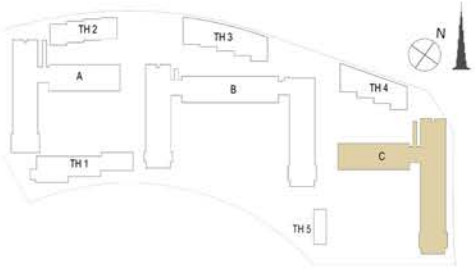
FLOOR PLANS



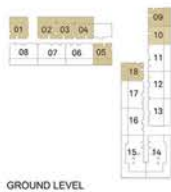
EMAAR



MERAAS



1 BEDROOM - 1A & 1B	
TOWER C	
LEVELS	UNITS
GF	01, 02, 03, 04, 05, 09, 10, 18
UNIT AREA	
56.41 Sq.m. / 607.19 Sq.ft.	
GARDEN AREA	
24.75 Sq.m. / 266.41 Sq.ft.	
TOTAL AREA	
81.16 Sq.m. / 873.60 Sq.ft.	



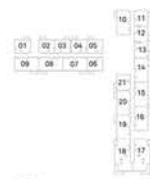
GROUND LEVEL



LEVEL 01



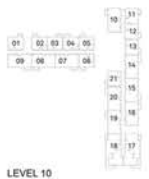
LEVEL 02-07



LEVEL 08



LEVEL 09



LEVEL 10



LEVEL 11



LEVEL 12



LEVEL 13-18



LEVEL 19-21



LEVEL 22

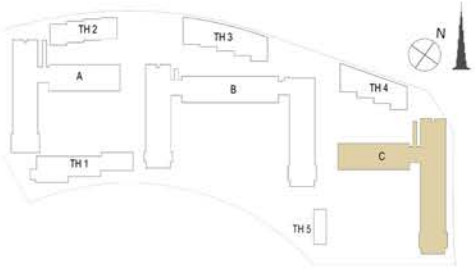
FLOOR PLAN 1. All dimensions are in imperial and metric, and measured from finish to finish excluding construction tolerances. 2. All materials, dimensions, and drawings are approximate only. 3. Information is subject to change without notice, at developer's absolute discretion. 4. Actual area may vary from the stated area. 5. Drawings not to scale. 6. All images used are for illustrative purposes only and do not represent the actual size, features, specifications, fittings, and furnishings. 7. The developer reserves the right to make revisions / alterations, at its absolute discretion, without any liability whatsoever.



EMAAR



MERAAS

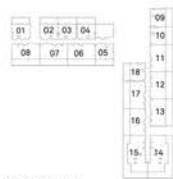


1 BEDROOM - 1C	
TOWER C	
LEVELS	UNITS
01	03, 04, 06, 12, 13, 21
02-07	03, 04, 06, 12, 13, 21
08	03, 04, 06, 12, 13, 21
09	03, 04, 06, 12, 13, 21
10	03, 04, 06, 12, 13, 21
11	03, 04, 06, 12, 13, 21
12	03, 04, 06, 12, 13, 21
13-18	03, 04, 06, 12, 13, 21
19-21	03, 04, 06, 12, 13, 21
22	03, 04, 12

UNIT AREA
 56.55 Sq.m. / 608.70 Sq.ft.

BALCONY AREA
 3.99 Sq.m. / 42.95 Sq.ft.

TOTAL AREA
 60.54 Sq.m. / 651.65 Sq.ft.



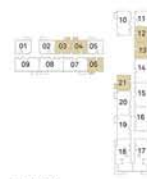
GROUND LEVEL



LEVEL 01



LEVEL 02-07



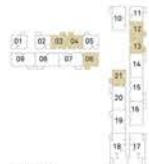
LEVEL 08



LEVEL 09



LEVEL 10



LEVEL 11



LEVEL 12



LEVEL 13-18



LEVEL 19-21



LEVEL 22

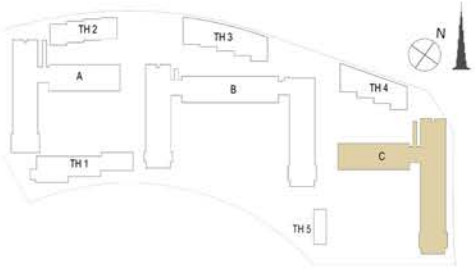
FLOOR PLAN 1. All dimensions are in imperial and metric, and measured from finish to finish excluding construction tolerances. 2. All materials, dimensions, and drawings are approximate only. 3. Information is subject to change without notice, at developer's absolute discretion. 4. Actual area may vary from the stated area. 5. Drawings not to scale. 6. All images used are for illustrative purposes only and do not represent the actual size, features, specifications, fittings, and furnishings. 7. The developer reserves the right to make revisions / alterations, at its absolute discretion, without any liability whatsoever.



EMAAR



MERAAS

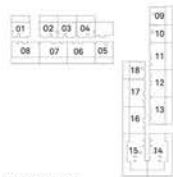


1 BEDROOM - 1D	
TOWER C	
LEVELS	UNITS
01	01, 02, 05, 11
02-07	01, 02, 05, 11
08	01, 02, 05, 11
09	01, 02, 05, 11
10	01, 02, 05, 11
11	01, 02, 05, 11
12	01, 02, 05, 11
13-18	01, 02, 05, 11
19-21	01, 02, 05, 11
22	02

UNIT AREA	
56.31	Sq.m. / 606.12 Sq.ft.

BALCONY AREA	
3.99	Sq.m. / 42.95 Sq.ft.

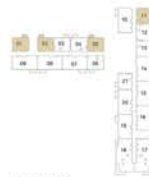
TOTAL AREA	
60.30	Sq.m. / 649.07 Sq.ft.



GROUND LEVEL



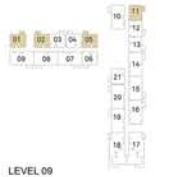
LEVEL 01



LEVEL 02-07



LEVEL 08



LEVEL 09



LEVEL 10



LEVEL 11



LEVEL 12



LEVEL 13-18

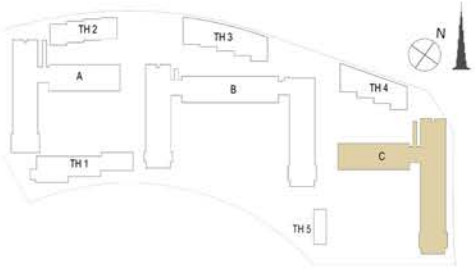


LEVEL 19-21

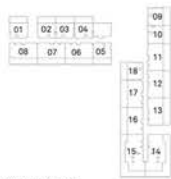


LEVEL 22

FLOOR PLAN 1. All dimensions are in imperial and metric, and measured from finish to finish excluding construction tolerances. 2. All materials, dimensions, and drawings are approximate only. 3. Information is subject to change without notice, at developer's absolute discretion. 4. Actual area may vary from the stated area. 5. Drawings not to scale. 6. All images used are for illustrative purposes only and do not represent the actual size, features, specifications, fittings, and furnishings. 7. The developer reserves the right to make revisions / alterations, at its absolute discretion, without any liability whatsoever.



1 BEDROOM - 1E	
TOWER C	
LEVELS	UNITS
19-21	17
22	08
UNIT AREA	
57.04 Sq.m. / 613.97 Sq.ft.	
BALCONY AREA	
2.92 Sq.m. / 31.43 Sq.ft.	
TOTAL AREA	
59.96 Sq.m. / 645.40 Sq.ft.	



GROUND LEVEL



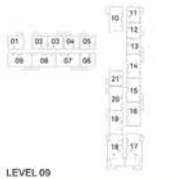
LEVEL 01



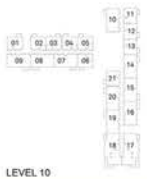
LEVEL 02-07



LEVEL 08



LEVEL 09



LEVEL 10



LEVEL 11



LEVEL 12



LEVEL 13-18

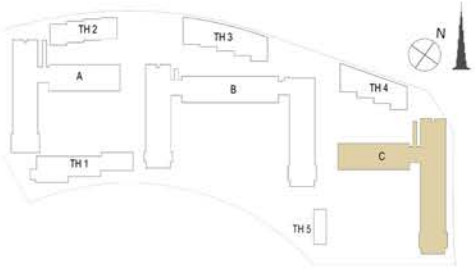


LEVEL 19-21



LEVEL 22

FLOOR PLAN 1. All dimensions are in imperial and metric, and measured from finish to finish excluding construction tolerances. 2. All materials, dimensions, and drawings are approximate only. 3. Information is subject to change without notice, at developer's absolute discretion. 4. Actual area may vary from the stated area. 5. Drawings not to scale. 6. All images used are for illustrative purposes only and do not represent the actual size, features, specifications, fittings, and furnishings. 7. The developer reserves the right to make revisions / alterations, at its absolute discretion, without any liability whatsoever.



2 BEDROOM - 2A	
TOWER C	
LEVELS	UNITS
GF	06, 07, 08, 11, 12, 13, 16, 17
UNIT AREA	
87.54 Sq.m. / 942.27 Sq.ft.	
GARDEN AREA	
39.22 Sq.m. / 422.16 Sq.ft.	
TOTAL AREA	
126.76 Sq.m. / 1364.43 Sq.ft.	



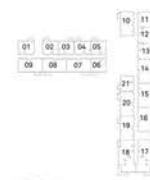
GROUND LEVEL



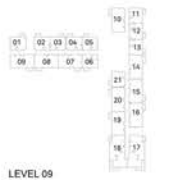
LEVEL 01



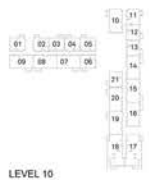
LEVEL 02-07



LEVEL 08



LEVEL 09



LEVEL 10



LEVEL 11



LEVEL 12



LEVEL 13-18

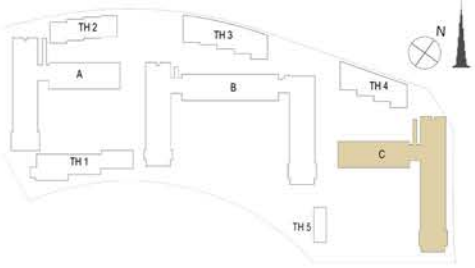


LEVEL 19-21



LEVEL 22

FLOOR PLAN 1. All dimensions are in imperial and metric, and measured from finish to finish excluding construction tolerances. 2. All materials, dimensions, and drawings are approximate only. 3. Information is subject to change without notice, at developer's absolute discretion. 4. Actual area may vary from the stated area. 5. Drawings not to scale. 6. All images used are for illustrative purposes only and do not represent the actual size, features, specifications, fittings, and furnishings. 7. The developer reserves the right to make revisions / alterations, at its absolute discretion, without any liability whatsoever.

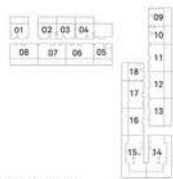


2 BEDROOM - 2C	
TOWER C	
LEVELS	UNITS
01	07, 08, 09, 10, 14, 15, 16, 19, 20
02-07	07, 08, 09, 10, 14, 15, 16, 19, 20
08	07, 08, 09, 10, 14, 15, 16, 19, 20
09	07, 08, 09, 10, 14, 15, 16, 19, 20
10	07, 08, 09, 10, 14, 15, 16, 19, 20
11	07, 08, 09, 10, 14, 15, 16, 19, 20
12	07, 08, 09, 10, 14, 15, 16, 19, 20
13-18	07, 08, 09, 10, 14, 15, 16, 19, 20
19-21	07, 08, 09, 10, 14, 15, 16, 19, 20
22	01, 05, 06, 07, 10, 11

UNIT AREA
87.60 Sq.m. / 942.92 Sq.ft.

BALCONY AREA
5.18 Sq.m. / 55.76 Sq.ft.

TOTAL AREA
92.78 Sq.m. / 998.68 Sq.ft.



GROUND LEVEL



LEVEL 01



LEVEL 02-07



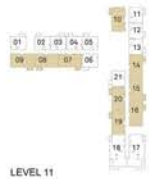
LEVEL 08



LEVEL 09



LEVEL 10



LEVEL 11



LEVEL 12



LEVEL 13-18

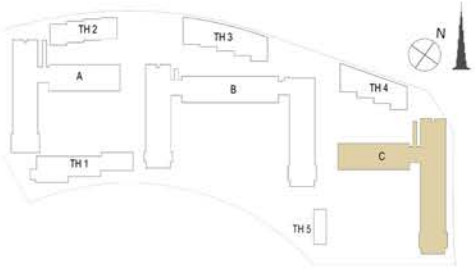


LEVEL 19-21

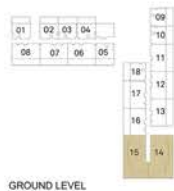
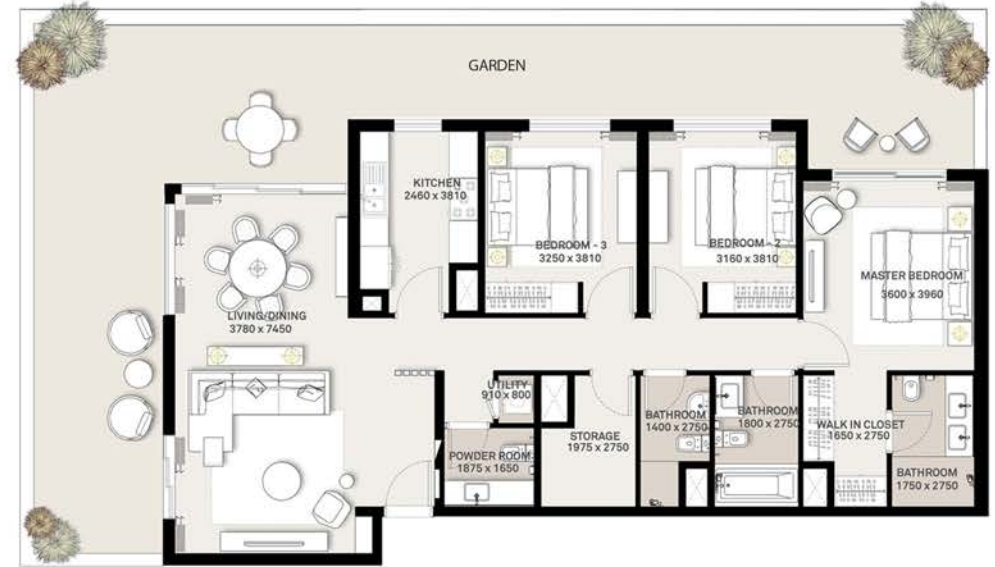


LEVEL 22

FLOOR PLAN 1. All dimensions are in imperial and metric, and measured from finish to finish excluding construction tolerances. 2. All materials, dimensions, and drawings are approximate only. 3. Information is subject to change without notice, at developer's absolute discretion. 4. Actual area may vary from the stated area. 5. Drawings not to scale. 6. All images used are for illustrative purposes only and do not represent the actual size, features, specifications, fittings, and furnishings. 7. The developer reserves the right to make revisions / alterations, at its absolute discretion, without any liability whatsoever.



3 BEDROOM - 3A	
TOWER C	
LEVELS	UNITS
GF	14, 15
UNIT AREA	
130.79 Sq.m. / 1407.81 Sq.ft.	
GARDEN AREA	
76.97 Sq.m. / 828.50 Sq.ft.	
TOTAL AREA	
207.76 Sq.m. / 2236.31 Sq.ft.	



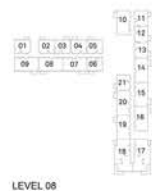
GROUND LEVEL



LEVEL 01



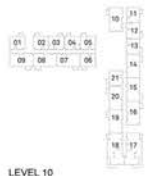
LEVEL 02-07



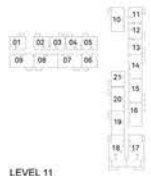
LEVEL 08



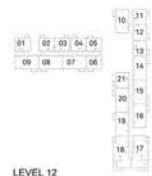
LEVEL 09



LEVEL 10



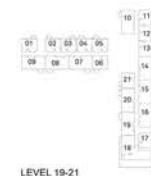
LEVEL 11



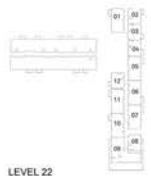
LEVEL 12



LEVEL 13-18

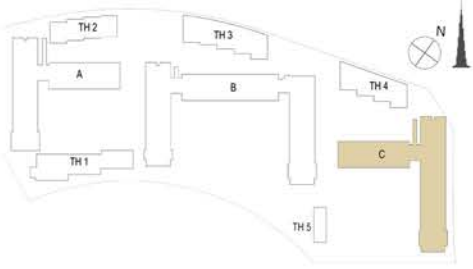


LEVEL 19-21

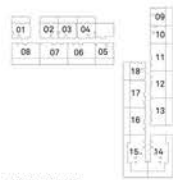


LEVEL 22

FLOOR PLAN 1. All dimensions are in imperial and metric, and measured from finish to finish excluding construction tolerances. 2. All materials, dimensions, and drawings are approximate only. 3. Information is subject to change without notice, at developer's absolute discretion. 4. Actual area may vary from the stated area. 5. Drawings not to scale. 6. All images used are for illustrative purposes only and do not represent the actual size, features, specifications, fittings, and furnishings. 7. The developer reserves the right to make revisions / alterations, at its absolute discretion, without any liability whatsoever.



3 BEDROOM - 3B	
TOWER C	
LEVELS	UNITS
01	17, 18
02-07	17, 18
08	17, 18
09	17, 18
10	17, 18
11	17, 18
12	17, 18
13-18	17, 18
UNIT AREA 130.79 Sq.m. / 1407.81 Sq.ft.	
BALCONY AREA 16.72 Sq.m. / 179.97 Sq.ft.	
TOTAL AREA 147.51 Sq.m. / 1587.78 Sq.ft.	



GROUND LEVEL



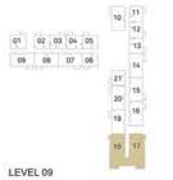
LEVEL 01



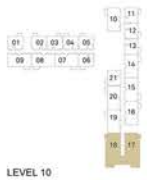
LEVEL 02-07



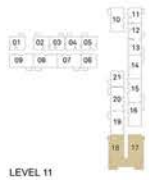
LEVEL 08



LEVEL 09



LEVEL 10



LEVEL 11



LEVEL 12



LEVEL 13-18

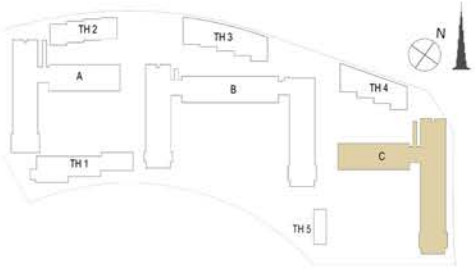


LEVEL 19-21

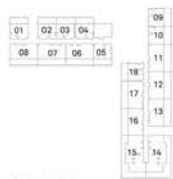


LEVEL 22

FLOOR PLAN 1. All dimensions are in imperial and metric, and measured from finish to finish excluding construction tolerances. 2. All materials, dimensions, and drawings are approximate only. 3. Information is subject to change without notice, at developer's absolute discretion. 4. Actual area may vary from the stated area. 5. Drawings not to scale. 6. All images used are for illustrative purposes only and do not represent the actual size, features, specifications, fittings, and furnishings. 7. The developer reserves the right to make revisions / alterations, at its absolute discretion, without any liability whatsoever.



3 BEDROOM - 3D	
TOWER C	
LEVELS	UNITS
19-21	18
22	09
UNIT AREA	
140.15 Sq.m. / 1508.56 Sq.ft.	
BALCONY AREA	
95.38 Sq.m. / 1026.66 Sq.ft.	
TOTAL AREA	
235.53 Sq.m. / 2535.22 Sq.ft.	



GROUND LEVEL



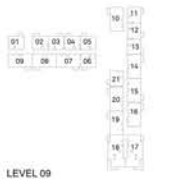
LEVEL 01



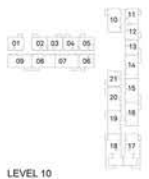
LEVEL 02-07



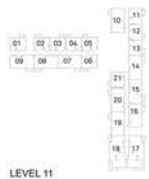
LEVEL 08



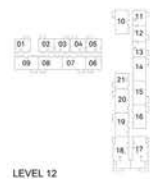
LEVEL 09



LEVEL 10



LEVEL 11



LEVEL 12



LEVEL 13-18

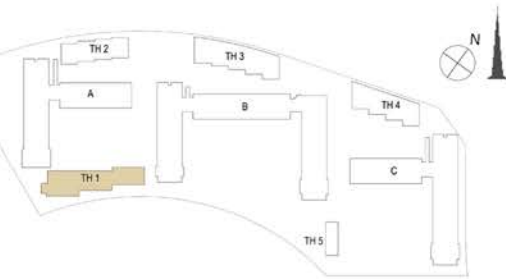


LEVEL 19-21

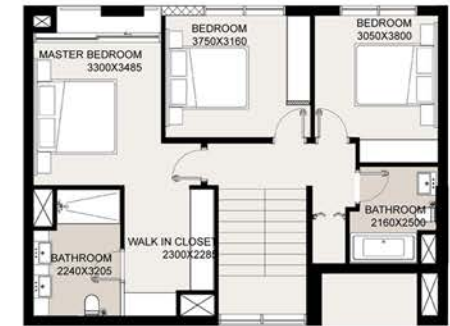


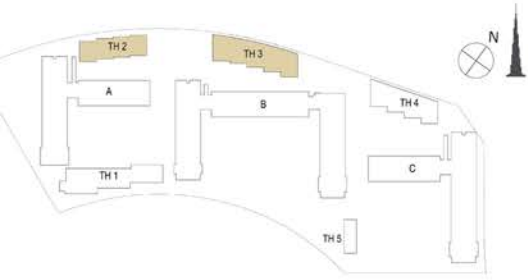
LEVEL 22

FLOOR PLAN 1. All dimensions are in imperial and metric, and measured from finish to finish excluding construction tolerances. 2. All materials, dimensions, and drawings are approximate only. 3. Information is subject to change without notice, at developer's absolute discretion. 4. Actual area may vary from the stated area. 5. Drawings not to scale. 6. All images used are for illustrative purposes only and do not represent the actual size, features, specifications, fittings, and furnishings. 7. The developer reserves the right to make revisions / alterations, at its absolute discretion, without any liability whatsoever.

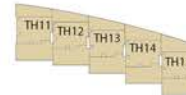
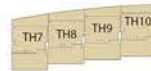
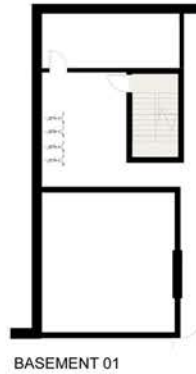


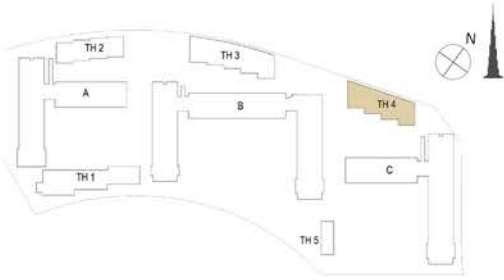
PODIUM TOWNHOUSES -TYPE A	
LEVELS	UNITS
	TH01, TH02, TH03, TH04, TH05, TH06
UNIT AREA	
	145.77 Sq.m. / 1569.06 Sq.ft.
GARDEN AREA	
	92.45 Sq.m. / 995.12 Sq.ft.
TOTAL AREA	
	238.22 Sq.m. / 2564.18 Sq.ft.



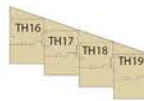
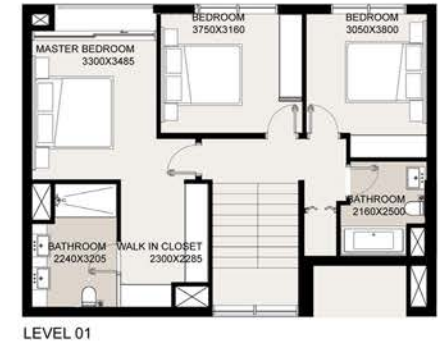
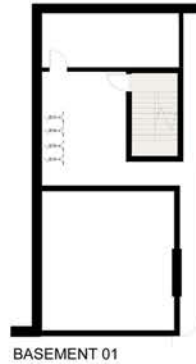


PODIUM TOWNHOUSES-TYPE B	
LEVELS	UNITS
	TH07, TH08, TH09, TH10, TH11, TH12, TH13, TH14, TH15
UNIT AREA	
	160.64 Sq.m. / 1729.11 Sq.ft.
GARDEN AREA	
	90.80 Sq.m. / 977.36 Sq.ft.
TOTAL AREA	
	251.44 Sq.m. / 2706.47 Sq.ft.

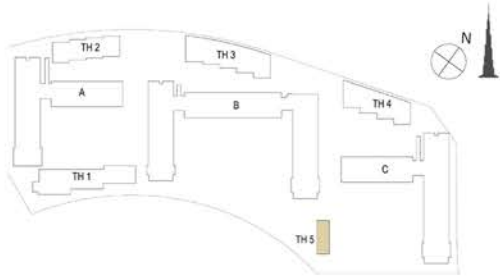




PODIUM TOWNHOUSES -TYPE C	
LEVELS	UNITS
	TH16, TH17, TH18, TH19
UNIT AREA	
160.74 Sq.m. / 1730.19 Sq.ft.	
GARDEN AREA	
93.78 Sq.m. / 1009.44 Sq.ft.	
TOTAL AREA	
254.52 Sq.m. / 2739.63 Sq.ft.	



FLOOR PLAN 1. All dimensions are in imperial and metric, and measured from finish to finish excluding construction tolerances. 2. All materials, dimensions, and drawings are approximate only. 3. Information is subject to change without notice, at developer's absolute discretion. 4. Actual area may vary from the stated area. 5. Drawings not to scale. 6. All images used are for illustrative purposes only and do not represent the actual size, features, specifications, fittings, and furnishings. 7. The developer reserves the right to make revisions / alterations, at its absolute discretion, without any liability whatsoever.



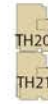
PODIUM TOWNHOUSES -TYPE D	
LEVELS	UNITS
	TH20, TH21
UNIT AREA	
160.74 Sq.m. / 1730.19 Sq.ft.	
GARDEN AREA	
24.53 Sq.m. / 264.04 Sq.ft.	
TOTAL AREA	
185.59 Sq.m. / 1997.68 Sq.ft.	



GROUND LEVEL



LEVEL 01



DUBAI HILLS ESTATE

PARK RIDGE

For more information on **Park Ridge** at **Dubai Hills Estate**, please call 800 36227(UAE) or +971 4 366 1688 (International). Visit our online sales centre at emaar.com or any of our sales centres across the UAE.

DUBAI

Dubai Hills Estate Sales Pavillion: Umm Suqeim Road
Emaar Sales Center: Downtown Dubai
Dubai Creek Harbour Sales Centre: Ras Al Khor

ABU DHABI

Emaar Sales Centre: Al Nahda Tower, Ground Floor, 4th Street,
Corniche, Al Muroor Road

Open from Saturday - Thursday, from 8.30am - 6pm

 **EMAAR** |  **MERAAS**

دبي هيلز استيت

بارك ريدج

للمزيد من المعلومات حول بارك ريدج في دبي هيلز استيت، الرجاء الاتصال بالرقم (04 3661688) في الإمارات العربية المتحدة أو +971 4 366 1688 (دولي) أو قم بزيارة مركز مبيعاتنا الإلكتروني على الموقع emaar.com

دبي

مركز مبيعات دبي هيلز استيت على طريق أم سقيم
مركز مبيعات إعمار في وسط مدينة دبي
مركز مبيعات خور دبي في رأس الخور

أبوظبي

مركز مبيعات إعمار في برج النهضة، الشارع الرابع،
الكورنيش، طريق المرور - أبوظبي

السبت إلى الخميس من الساعة ٨:٣٠ صباحاً حتى الساعة ٦ مساءً

 **إعمار** |  **إعمار**